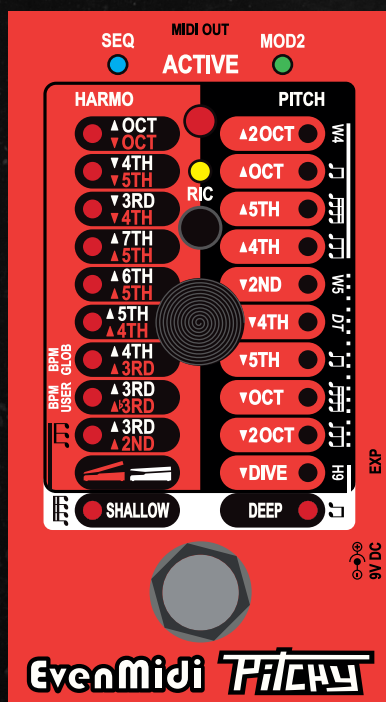


EvenMidi®

www.evenmidi.com

Pitchy

MIDI CONTROLLER



USER MANUAL

ENGLISH



WARNING
TO REDUCE THE RISK OF FIRE OR
ELECTRIC SHOCK DO NOT EXPOSE THIS
EQUIPMENT TO RAIN OR MOISTURE

AVERTISSEMENTS
Use only with 9V DC 200mA 2,1mm negative
center power supply. Avoid spilling liquids onto/
into the unit. Do not expose to excessive heat
or moisture. Do not open – there are no user
serviceable parts inside.

This equipment has been tested and found to comply with the limits for a Class B digital device pursuant to Part 15 of FCC rules. Operation is subject to the following two conditions: (1) This device may not cause harmful interference, and (2) this device must accept any interference received, including interference that may cause undesired operation.



EvenMidi® is a trademark by Webrox. Eventide® is a trademark by Eventide inc. Strymon® is a trademark by Damage control inc and Digitech® is a trademark by Harman inc. EvenMidi has no connection or affiliation with Eventide® inc. The TimeFactor PitchFactor ModFactor and Space products are effects created by Eventide®. The Timeline, Mobius and BigSky are Strymon® products. The Whammy® is a Digitech® product.

MADE IN FRANCE
EvenMidi
MIDI CONTROLLER

Pitchy
www.evenmidi.com
2017

Thank you for purchasing Pitchy Midi controller. First it was a DIY project and now it's a professional tool. We added a lot of features and received some cool suggestions from your comments. You'll be very happy to control your Digitech® Whammy® or your Eventide® H9/PitchFactor with Pitchy. Have Fun!

Specifications

Use a MIDI cable (5DIN) to connect the EvenMidi® Pitchy to the Eventide® H9/PitchFactor or Digitech® Whammy®.

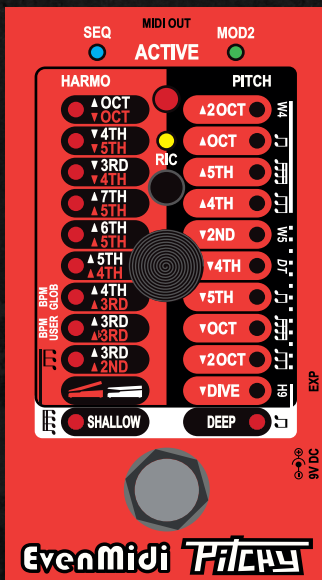
MIDI OUT: Connect Pitchy to
Eventide® H9/PitchFactor or
Digitech® Whammy® MIDI IN

EXP: TRS - Expression pedal
From 10k to 50k Ohms or
Footswitches

DC INPUT: Connect a power
supply 9V DC 2,1mm - negative
center 200mA

SEQ LED: Sequencer Mode
active status

MOD2 LED: Mod2 Active status
or Tempo indication



RIC LED & SWITCH: Ricochet
Mode Led status & active

ACTIVE LED: Led active status

ENCODER: Changing presets

ENCODER SWITCH: Active Mod2
if available and more

FOOTSWITCH: Activate/Bypass
Pitchy

HARMO: 9 presets
PITCH: 10 presets
DETUNE: 2 presets

VERTICAL MENU: Display all the
Pitchy Modes

Features

■ 1 - EVENMIDI® PITCHY FEATURES

Pitchy contains a lot of cool features.

With an Eventide® H9, PitchFactor:

- Recall all Whammy® presets with only one Eventide® Preset

With a Digitech® Whammy® 4:

- Recall all whammy® presets and add the 4 «missing» presets compared to the whammy® 5 (+5th + 4th - 4th - 5th)

With a Digitech Whammy® 5, Bass, DT:

- Recall all whammy® presets and access to Classic/ Chords (W5) or Drop Tune (DT) menu with Encoder switch (status = Led Mod2)

Sequencers :

- 3 sequencers type: 1/8th, 1/16th, 1/12th note
- 8 presets by sequencer type
- Sequencer Editor, Test & Save
- Tap tempo
- Use global tempo or Preset Tempo

Ricochet

- Use the footswitch as an expression pedal
- Set the ricochet Up and Down speed
- In sequencer Mode, Ricochet launch only one Sequence if pressed one time.

Expression input type with only one TRS cable

- Expression pedal
- 3 momentary footswitches (preset+, preset-, active)
- Expression pedal + one momentary footswitch (activate)
- EvenMidi Magic Switch (3 momentary footswitches + Expression). Passive. Available soon.

Global

Expression pedal or Ricochet are always sent, even if the preset is not loaded. It means you don't have to use several expression pedals for your others Eventide® presets.

Settings

Midi channel Sent (1-16)
Expression pedal Calibration
Expression input type

Eventide® H9/PitchFactor Settings

■ 2 - EVENTIDE® SETTINGS

1) Create your Presets

Pitchy calls 2 presets on your Eventide® :

- 1 for the Whammy® effect
- 1 for the Sequencer effect

You need to create this 2 presets as below. Save it on your wanted preset number, then assigned it to the Specific Midi Program Change:

2) Your Whammy preset -> Midi PC 117 Called

Algorithm: PitchFlex

Mix: 100 | **PitchMix:** A10 B0 | **Heel-A:** Unison

Heel-B: Unison | **HTGLIS:** Instant | **THGLIS:** Instant

LPF: 22 | **SHAPE:** 0 | **TOE-A:** Unison | **TOE-B:** Unison

Name: Whammy®

3) Your Sequencer preset -> Midi PC 118 Called

Algorithm: PitchFlex

Mix: 100 | **PitchMix:** A10 B0 | **Heel-A:** -2 oct.

Heel-B: Unison | **HTGLIS:** Instant | **THGLIS:** Instant

LPF: 22 | **SHAPE:** 0 | **TOE-A:** +2 oct. | **TOE-B:** Unison

Name: Sequencer

You have to set your Eventide® H9 to work properly with the controller. Use the H9 control software is easy to set parameters in **Pedal>MIDI Settings**. You can also **hold down Hotknob and Tap for 2s.** then scroll with encoder to access **MIDI** settings. **Press the «encoder switch»** to enter menu and **press «presets» switch** to return. **Hold down Hotknob and Tap for 2s.** to save & exit.

4) MIDI Channel - *PCV.CH*

Set your H9 or PitchFactor on Midi channel receive 1 for example.

5) Assign MIDI CC messages - *PCV.CTL*

Press Tap or Active and use encoder to set properly.

K30-K39 Set parameter 1-10 ► C22-C31

EXP Set expression pedal value ► BND (PitchBend)

6) Assign MIDI PC messages - *PCV.MAP*

Press Tap or Active and use encoder to set properly.

117 PC Number 117 ► Your Whammy Preset Number

118 PC Number 118 ► Your Sequencer Preset Number

125 PC Number 125 ► BYP (bypass the pedal)

126 PC Number 126 ► ACT (activate the pedal)



If your Eventide® H9 is connected with H9 app :

- via Bluetooth, you must turn on MIDI over Bluetooth in MIDI settings to make MIDI works.
- via USB, you can't use MIDI IN Eventide® H9 port to make MIDI works but you can use your MIDI IN soundcard. Check Settings>Connect MIDI Device to Eventide® Device in H9 control app.

Digitech® Whammy® Settings

■ 3 - DIGITECH® WHAMMY® 4, 5, BASS, DT SETTINGS

You may need to set the MIDI Channel received on your Whammy® 4, 5, Bass or DT. **Press the footswitch** at start then turn the rotary encoder to the MIDI channel wanted. Choose channel Omni or 1 if you control

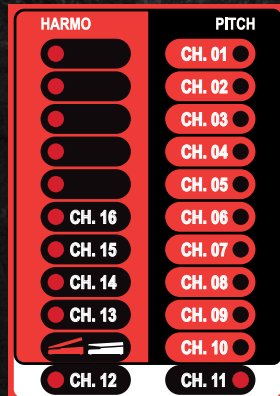
only whammy via MIDI or if you have no idea. Then **press the footswitch** again to save. For more details just check the Digitech® user manual on Digitech® website.

EvenMidi® Pitchy Settings

■ 4-MIDI CHANNEL SENT

By default, Pitchy send Midi messages on channel 1. The Midi channel sent must matched with the Midi channel received. To change it :

- **Hold the Footswitch** when Pitchy starts: the red Led flashes
- Select your channel Midi as indicated below with the rotary encoder
- Save & Exit: **Press the encoder switch**, the 3 upper Leds flash 10 times
- Exit without save: **Press the Footswitch**



■ 5-HARD RESET

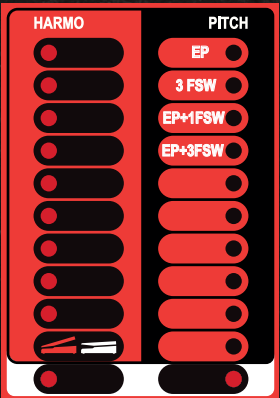
- Enter in Midi channel settings: **Hold the Footswitch when Pitchy starts**, the red Led flashes
- **Hold the Footswitch for 10s.**: the 3 upper Leds flash 20 times: hard reset is done, all factory settings are recalled. All sequence presets are back to factory presets.
- Exit: **Press the Footswitch**

■ 6-EXPRESSION INPUT MODE

The EXP input allows 4 different hardware connections possible with a single TRS cable.

Access to the Expression mode:

- **Hold the footswitch and the encoder switch** when Pitchy starts: the red Led flashes and Blue and Green Leds turn on.
- Select your Expression Mode as indicated on the right diagram with the rotary encoder.
- Save & Exit: **Press the encoder switch**, the 3 upper Leds flash 10 times
- Exit without save: **Press the Footswitch**



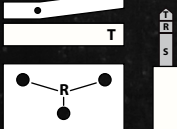
EP: 1 Expression Pedal connected with a TRS cable.
T = Expression Value
R = Electrical voltage



EP+1FSW: 1 Expression Pedal including a Momentary footswitch connected with a TRS cable.
R = Active
T = Expression Value



3FSW: 3 Momentary footswitches connected with a TRS cable.
T = Preset-
T+R = Preset+
R = Active



EP+3FSW: EvenMidi® Magic Switch = 1 Expression Pedal + 3 Momentary footswitches connected with a TRS cable.
R = Preset -, Preset +, Active
T = Expression Value

■ 7-EXPRESSION PEDAL CALIBRATION

By default, Pitchy is set to work with a 10k Ohms expression pedal potentiometer. You may need to calibrate the pedal as you prefer.

Calibration process :

- Connect your expression pedal to Pitchy
- **Hold the encoder switch** when Pitchy starts: the blue Led flashes
- Move your expression pedal: the Leds follow your foot movment

- Push the pedal to max. toe.
- **Press the footswitch**: the green Led flashes
- Push the pedal to min. heel.
- Save & Exit: **Press the footswitch**, the 3 upper Leds flash 10 times
- Exit without save: **Press the encoder switch**

If the distance between max and min value are too small, Pitchy will restore factory values.



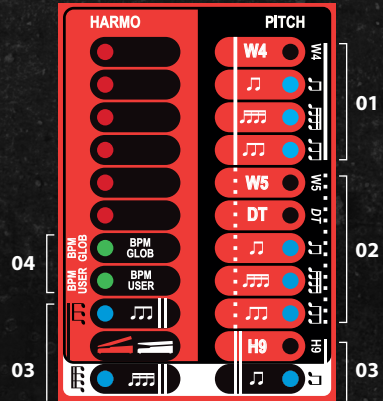
EvenMidi® Pitchy behavior

■ 8-PITCHY MODES

You have to select the Pitchy Mode according to your target device. The pitchy mode allows to access whammy-type, sequencers and tempo modes.

Access to Pitchy Mode:

- **Press Footswitch + Encoder switch**
- Red Led flashes. If you are on a Sequencer Mode, The blue Led turns on. If you are on a Tempo(BPM) Mode, The green Led turns on
- Select the needed Pitchy mode with rotary encoder
- Save & Exit: **press the encoder switch**, the 3 upper Leds flash 10 times
- Exit without Save: **press the footswitch**



Check the diagram on your top right. As you can see each device is grouped:

- 01 - W4 = Whammy 4 | W4 Sequencer 1 | W4 Sequencer 2 | W4 Sequencer 3
- 02 - W5 = Whammy 5/Bass | DT = Whammy DT | W5/DT Sequencer 1 | W5/DT Sequencer 2 | W5/DT Sequencer 3
- 03 - H9 = Eventide H9/PitchFactor | H9 Sequencer 1 | H9 Sequencer 2 | H9 Sequencer 3
- 04 - TEMPO : BPM User (by preset) | BPM Global (same BPM for all presets)

■ 9-MOD2 ●

When you load W5(Whammy® 5) or DT (Whammy® DT) Pitchy Mode, **the encoder switch allows you to switch to the MOD2**. The green Led turns ON when MOD2 is activated.

W5: the MOD2 switches from Classic to Chords Mode

DT: the MOD2 switches from Whammy® to Drop Tune Mode. Check the diagram on your right:

Encoder switch has no effect with W4 or H9 modes. It's impossible to use MOD2 with Sequencers.

● Whammy DT - Mod2 = Drop Tune



■ 10-RICOCHET ●

You can easily turning On or Off Ricochet Mode: **press the RIC switch**. When activated, **the yellow Led turns ON**. Even if you are in Ricochet Mode the expression pedal still works.

Ricochet simulate an Expression pedal. You have to set the Up and Down time in Pitchy Ricochet Settings (next paragraph).

The activate Led light follows the Ricochet time progression when the footswitch or the external footswitch is engaged.

With Eventide® H9 or Pitchfactor, **press the footswitch 2 times quickly to call the Preset (Program Change 117)**: the blue and green Led turn On when the Preset is called.

■ 11-RICOCHET SETTINGS ●

Access to Ricochet Settings: you have to be on W4,W5,DT or H9 Mode (NON-Sequencer) with Ricochet switch engaged (**Yellow Led turns On**) to set it.

- **Hold encoder switch 2s.** to access Ricochet settings
- The red Led flashes according to Ricochet Up speed.
- **Press the Footswitch** to check Ricochet Speed.
- Move the rotary encoder to increase or decrease Ricochet Up speed value.
- Once your Ricochet Up speed value is Ok, **press the encoder switch**.
- Now the Green Led flashes according to Ricochet Down Speed value
- **Press the Footswitch** to check Ricochet Speed.
- Move the rotary encoder to increase or decrease Ricochet Down speed value.
- Save & Exit = **Hold encoder switch 2s.**
- Exit without save = **Press the footswitch 2 times very quickly.**



EvenMidi® Pitchy Sequencer ●

The Pitchy includes a simple but very cool Sequencer fully editable. A sequencer is a succession of notes looped in rhythm. It means that when you play one note, you will hear a succession of several other notes.

The Pitchy sequencer works as an expression pedal which moving its position according to targeted notes of your sequence. We have record the exact expression pedal position value for each semi-ton with a Tuner and for each device H9/W4/W5.

- With the whammy 4, 5, BASS, DT the sequencer only use 2 presets: - 2octaves, + 2octaves
- With the Eventide H9/PitchFactor the presets is set to - 2octaves, + 2octaves

■ 12 - ACCESS TO SEQUENCER

Enter in Pitchy Mode (**Press footswitch + encoder switch**) and select one of the three sequencers:



1/8th, 1/16th, 1/12th notes. According to sequencer selected the presets will contain 8 or 16 or 12 notes. 8 or 16 is for binary sequences and 12 is for triplet ternary sequences.

■ 13 - LAUNCH A SEQUENCE

In standard Mode **press the footswitch** to launch the

looped sequence. Pressing the footswitch again stops the sequence after its cycle ending.

In Ricochet Mode, **press the footswitch** to launch the sequence: the sequence is only played one time and then stops. Hold the footswitch to loop the sequence.

■ 14 - TAP TEMPO

The encoder switch works as a tap tempo. **Tap 3 times regularly on the encoder switch** to change the tempo.

Note: you can't Tap tempo when your in the Sequencer Editor. Tap the desired tempo before edit the sequence to make the tempo saved.

Warning: If you are in Ricochet Mode and you **press the encoder switch** while **holding the footswitch** to loop your sequence, you will enter in Pitchy Mode, not change the tempo!

■ 15 - SEQUENCER PRESETS

For each sequencer you have 8 presets:

- 8 presets for 1/8th note
- 8 presets for 1/16th note
- 8 presets for 1/12th note

This presets are shared with all materials (W4,W5,DT & H9). Simply select preset wanted with the rotary encoder.

EvenMidi® Pitchy Sequencer Editor •

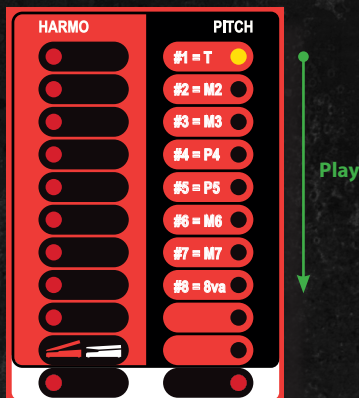
■ 16 - ACCESS SEQUENCER EDITOR

You can edit, test and store each sequencer preset.

To edit a sequence, select the sequence with the rotary encoder then press the encoder switch for 2s.

All notes are apportioned on red Leds. The red Led is flashing during edition.

Here is an example of a major scale on a sequence in eighth notes:



■ 17 - TEST YOUR SEQUENCE

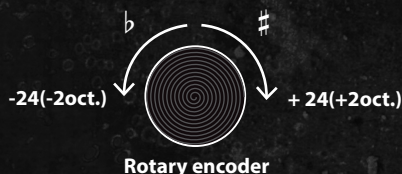
Press the footswitch to play the sequence one time.

The Leds scroll one by one according to sequence number of notes (8,16 or 12).

■ 18 - EDIT A NOTE

Move the rotary encoder to select the note you want to change. You can hear the different notes when moving the rotary encoder. **Press the encoder switch** to access to note edition: **the red led flashes faster**.

Move the rotary encoder will change the note semi-ton by semi-ton. If you want to switch from original note to targeted note, **press the footswitch**. Very handy!



Once you have chosen the wanted note, **press the encoder switch** again : you're back in the sequence.

Repeat this process for the 8 or 16 or 12 notes.

■ 19 - SAVE YOUR SEQUENCE OR EXIT

- To save the sequence and exit, **hold the encoder switch for 2s**.

- To exit without saving, **press the footswitch 2 times quickly**.

Conclusion

As you just read it, the Pitchy is a little cool red box which hide an awesome and not ordinary Midi controller.

It will be usefull for the musicians who want to:

- transform their Eventide H9/PitchFactor as a Whammy including Ricochet and Sequencer.
- rack their whammy or/and extends whammy capabilities with Ricochet and Sequencer
- reduce place on their pedalboard but without losing whammy sound/presets/gesture.
- share only one expression pedal with all their effect to reduce pedalboard.

Guitarists, bassists, electronic musicians and all musicians can enjoy this little box because it's a lot of fun to play with it and it's a very creative tool. We worked a lot of time on it, so we hope you will love it.

All the best,
Franck Graziano